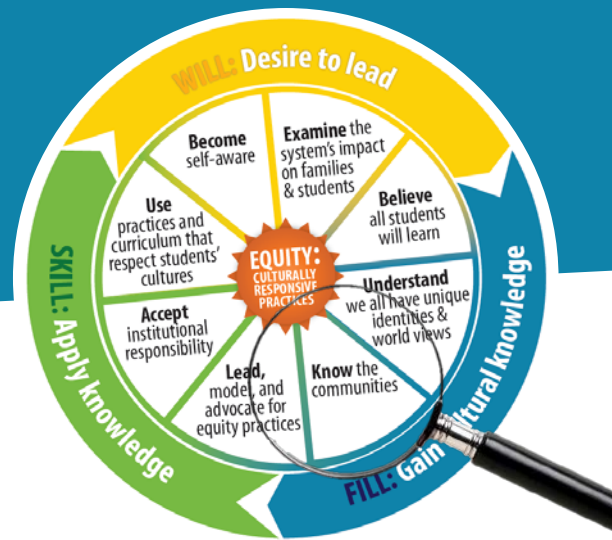


MISSION POSSIBLE: Know The Communities

Adapted from: Indiana University School of Education - IUPUI Diversity and Learning Course M322



THE ASSIGNMENT

Discover and explore the cultural assets that exist within your school community.

MISSION DETAILS

- **Examine** the student’s world and think about how this may affect their learning.
- This mission provides space for **dialogue** with students and community members.
- This pragmatic approach will help you **question and construct meaning** to the notions of culture, community, and learning.

IDENTIFY

Identifying the physical and descriptive boundaries of the community. Start by conducting a “windshield survey” of the community. As you drive or walk through the community, develop your perceptions of what you **See, Hear, Smell, Touch, and Feel**.

THINK ABOUT

Use the chart to fill in your thoughts and observations for each. [Click for specific questions to ask yourself or take a full asset-based community assessment.](#)

Housing & Zoning	Space Use	Boundaries	Common Areas	Transportation	Service Centers
Race, Ethnicity, and Religion	Streets	Politics	Media	Community Personality	Stores

IMPLICATIONS AND CONNECTIONS

Summarize your findings and think of ways to use this information to better understand, and to develop relationships with, the students in your classroom.